

Session 14

Research Presentation

Rupinder Brar,
Founder & Director, Greenlab



Medical Cannabis New Zealand Updates



GREENLAB

- **Rupinder Brar**

- Founder & Director Greenlab
- <https://greenlab.co.nz>
- Chairman Punvec
- <https://punvec.com.au>



GREENLAB

Aotearoa New Zealand Recognition & Acknowledgements- Greenlab



New Zealand Medicinal Cannabis Council

Te Kaunihera Rautini
o Aotearoa

**The peak representative organisation
for a New Zealand medicinal cannabis sector
focussed on equitable and affordable access
to cannabinoid based medicines
for better patient outcomes.**



GREENLAB

Cannasouth Bioscience
Greenfern Industries
Greenlab
Helius Therapeutics
Midlands Seed
Ora Pharm
Puro New Zealand
Rua Bioscience
AbacusBio
Asure Quality
Hill Laboratories
Medicorp Cannabis New Zealand
Medreleaf NZ
Pause Labs (Chill Division)
Pure Isolation
Scitek
Te Rongoa Pai Consulting

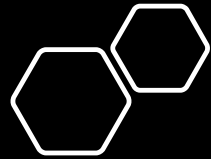
Aotearoa New Zealand Recognition & Acknowledgements- Greenlab

HELIUS[®]

New Zealand's largest integrated cannabinoid pharmaceuticals company operating from our 8,800sqm site in East Tamaki, Auckland

Onsite GMP cultivation, extraction, manufacturing, packaging and analytical labs

Own onsite R&D team and dedicated laboratory + R&D collaborations with Universities in place



Helius Therapeutics – Greenlab collaboration on Genetics Evaluation of Medical Cannabis



GREENLAB



A bit about Helius Therapeutics

Aotearoa New Zealand Recognition & Acknowledgements- Greenlab



Helius Therapeutics exists to improve the health of those under-served by the conventional pharmaceutical approach

Distinctive capabilities

- International experience in cannabis & pharmaceuticals
- State of the art, GMP certified manufacturing
- Large government grants for R&D and export
- Vertical integration and diversified biomass supply
- Strong deal and product pipeline into main territories



What Helius stands for



Entourage effect

“Working together to achieve bigger and better results. Unlocking the full potential at Helius through teamwork and partnerships”



Caring

“We care about our people, patients, products, the community, the environment, the industry and one another. We care about what we do, so we do it right”



Curiosity

“Continually looking for better and more innovative ways of doing things by questioning the status quo. Asking questions and striving for a deeper understanding of the situation”



Getting it done

“Holding ourselves and each other accountable for delivering our Helius goals and commitments”



Global challenges – mismatch between researchers and industry in USA

[nature](#) > [scientific reports](#) > [articles](#) > [article](#)

[Open Access](#) | [Published: 19 April 2017](#)

Compromised External Validity: Federally Produced Cannabis research stalled by federal inaction

US scientists face numerous barriers to studying health effects of cannabis

by [Britt E. Erickson](#)

June 29, 2020 | A version of this story appeared in [Volume 98, Issue 25](#)

current range of federally-produced *Cannabis* thus may yield limited insights into the chemical, biological and pharmacological properties, and medical potential of material that is available in the state markets. Investigation is urgently needed on the full diversity of *Cannabis* chemotypes known to be available to the public.



GREENLAB



Greenlab & UoA collaboration on Medical Cannabis Waste Management



Chemical Engineering - Leading the Transition into a Sustainable Future

An analysis of waste management and resource recovery options for medicinal cannabis waste

Kerry Jack Robertson ^a, Rupinder Brar ^b, Parmjit Randhawa ^b, Christine St Baroutian ^{a,c,d,*}

^a Department of Chemical and Materials Engineering, The University of Auckland, 1010, New Zealand

^b Greenlab, Lincoln University Campus, Ellesmere Junction Road, Lincoln, New Zealand

^c Circular Innovations (CIRCUIT) Research Centre, The University of Auckland



[Home](#) [About](#) [What We Do](#) [News](#) [Careers](#) [Invest](#) [Contact Us](#)

EXTRACTION AFFILIATE



PHARMACEUTICAL AND CLINICAL TRIALS ADVISORY PARTNERS



Ministry for Primary Industries
Manatū Ahu Matua



CDA CLINICS

RESEARCH ASSOCIATE



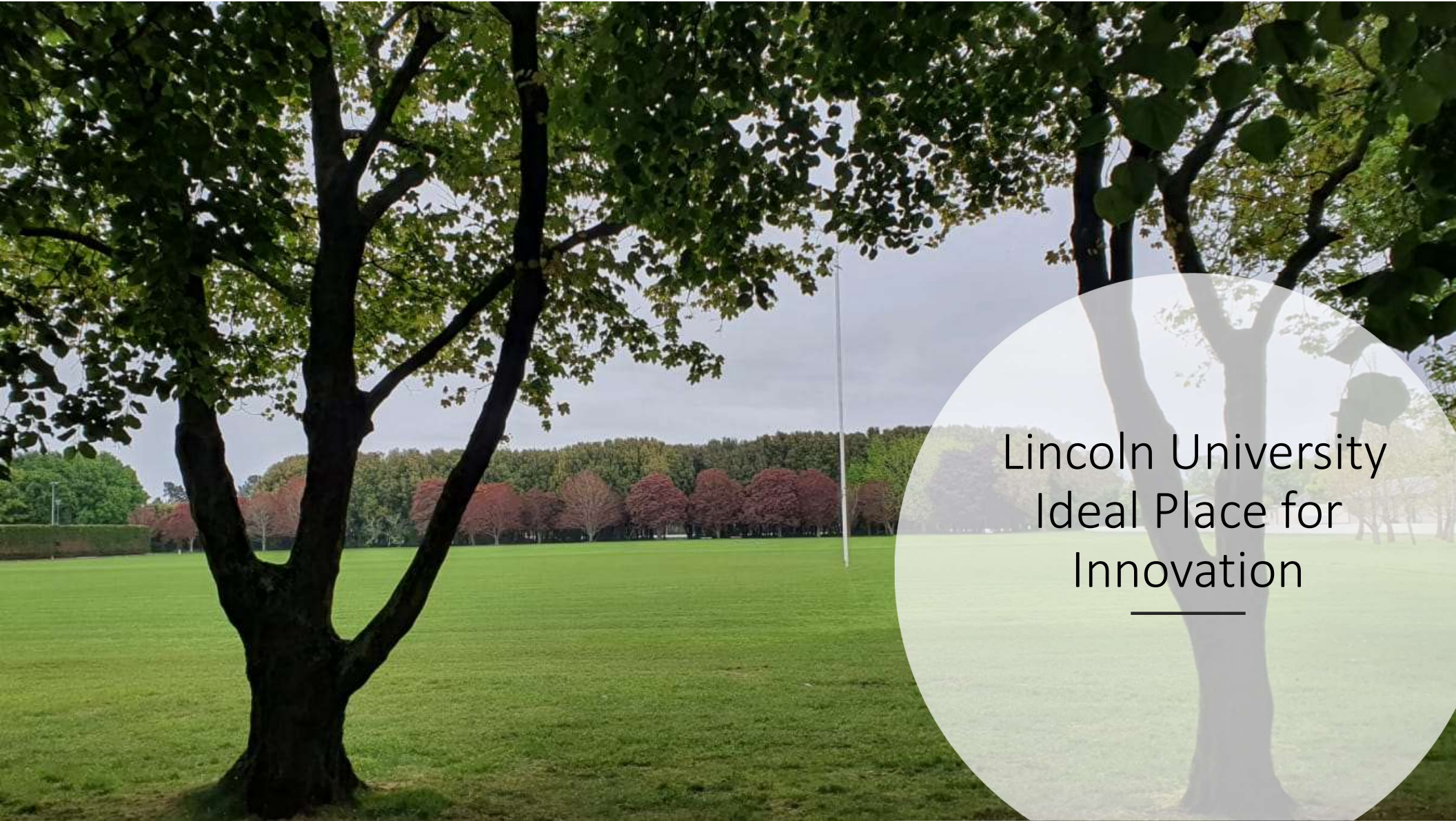
STRATEGIC PARTNERS



Greenlab Uniqueness -Cultivars, Genetics, Germplasm & Accessions



GREENLAB



Lincoln University
Ideal Place for
Innovation

Our Goal

To be the Centre of Excellence for the supply of germplasm with novel, high potential, high value active pharmaceutical ingredients (API), grown sustainably and safely, for the global medicinal cannabis industry



GREENLAB™

- ✓ By creating diversified revenue streams from breeding of new varieties with high value APIs
- ✓ Contributing to the circular economy, with proprietary novel waste solutions that can transform medicinal cannabis waste into high value value-added products
- ✓ By leveraging our deep knowledge of regulatory environments & our global market relationships

Thank you



NEWZEALAND

Green Relief NZ Ltd
T/A Greenlab
Blinc Innovation,
Lincoln University
Lincoln 7647



Email

info@greenlab.co.nz



AUSTRALIA

Greenlab Pty Ltd
200 Wells Street,
South Melbourne
3205 Victoria

Postal Address

PO Box 69169, Lincoln 7608



Website

<https://greenlab.co.nz>

Follow Us

[LinkedIn](#) [Facebook](#)

Big Bro in
Cannabis
Innovation

